

PERFORMANCE

Processor

Intel® Core™ i7-12700H, 14C (6P + 8E) / 20T, P-core 2.3 / 4.7GHz, E-core 1.7 / 3.5GHz, 24MB

Graphics

NVIDIA® GeForce RTX™ 3050 4GB GDDR6

Chipset

Intel SoC Platform

Memory

1x 16GB SO-DIMM DDR5-4800 Non-ECC

Memory Slots

Two DDR5 SO-DIMM slots, dual-channel capable

Max Memory

Up to 64GB DDR5-4800

Storage

512GB SSD M.2 2280 PCIe® 4.0x4 NVMe® Opal 2.0

Storage Support

Up to two drives, 2x M.2 SSD

- M.2 2280 SSD up to 4TB, 2TB each
- RAID 0/1 support

Storage Slot

Two M.2 2280 PCIe 4.0 x4 slots

Card Reader

SD Reader

Audio Chip

High Definition (HD) Audio, Realtek® ALC3287 codec

Speakers

Stereo speakers, 2W x2, Dolby® Audio™ Premium

Camera

HD 720p + IR with Privacy Shutter

Microphone

2x, Array

Battery

Integrated 68Wh

Power Adapter

135W Slim Tip (3-pin)

DESIGN

Display

15.6" FHD (1920x1080) IPS 300nits Anti-glare, 45% NTSC

Keyboard

Backlit, French

Case Color

Black

Case Material

PC + ABS (Top), PC + ABS (Bottom)

Dimensions (WxDxH)

366.5 x 250 x 22.7 mm (14.43 x 9.84 x 0.89 inches)

Weight

Starting at 2.226 kg (4.91 lbs)

SOFTWARE

Operating System

Windows® 11 DG Windows 10 Pro 64, French

CONNECTIVITY

Ethernet

100/1000M (RJ-45)

WLAN + Bluetooth®

Intel Wi-Fi® 6E AX211, 11ax 2x2 + BT5.1

WWAN

WWAN Upgradable to 4G

Standard Ports

- 1x Headphone / microphone combo jack (3.5mm)
- 1x HDMI®, up to 4K/60Hz
- 1x Power connector
- 1x Thunderbolt™ 4 / USB4® 40Gbps (support data transfer, Power Delivery 3.0 and DisplayPort™ 1.4)
- 1x Ethernet (RJ-45)
- 1x SD card reader
- 2x USB 3.2 Gen 1 (one Always On)

Optional Ports (configured)

- 1x Smart card reader
- 1x Nano-SIM card slot (WWAN support models)

Docking

Various docking solutions supported via Thunderbolt, USB-C®, or USB-A.

For more compatible docking solutions, please visit [Docking for ThinkPad® T15p Gen 3](#)

SECURITY & PRIVACY

Smart Card Reader

Smart Card Reader

Security Chip

Discrete TPM 2.0

Fingerprint Reader

Touch Style, Match-on-Chip, on Palm Rest

Physical Locks

Kensington® Security Slot™, 3 x 7 mm

Other Security

Camera privacy shutter

MANAGEABILITY

System Management

Non-vPro®

SERVICE

Base Warranty

3-year, Courier or Carry-in

Included Upgrade

3Y Premier TP WS WHB (CPN) (5WS1B09494), CO2 Offset 2 ton (5WS1C41957)

CERTIFICATIONS

Green Certifications

- EPEAT™ Gold
- RoHS compliant
- ENERGY STAR® 8.0

Mil-Spec Test

MIL-STD-810H military test passed

ISV Certifications

Please visit [ISV certifications for Lenovo® Workstations](#)

MODEL

TopSeller : Yes

Announce Date : 2022-04-26

EAN / UPC / JAN : 0196380203909

End of Support : 2028-10-08



· Lenovo reserves the right to change specifications or other product information without notice.

· Product image on this page is a sample, it may not match the real color of this model

· Battery life is an estimated maximum. Actual battery life may vary based on many factors, including screen brightness, active applications, features, power management settings, battery age and conditioning, and other customer preferences

Premier Support - A direct 24x7x365 line to our most elite technicians.



Advanced technical support, 24x7x365, in more than 100 markets



Technical Account Managers for proactive relationship and escalation management



Comprehensive hardware & OEM software support



Priority on service delivery and repair parts



Single point of contact for simplified end-to-end case management



Lenovo Service Connect Portal for customized reporting and product support

Accidental Damage Protection - Protection of your PC from the unexpected.

Experience shows that a significant portion of devices may be damaged (and not covered under warranty) in the first three years. Lenovo's Accidental Damage Protection service covers accidents beyond the system warranty such as drops, spills, bumps and even electrical surges. Make sure your new device has maximum protection, avoid unplanned costs and get peace of mind.

Base Warranty - Included with the systems you purchase, default 1- or 3-year coverage window.

Warranty Extensions & Upgrades - Service and protection that's right for your circumstances.

- Pick Up & Return Courier
- Onsite Support
- Technician Installed Customer
- Replaceable Unit Service
- International Warranty Upgrade

Lenovo may not offer the products, services or features discussed in this document in all regions. Lenovo may withdraw an offering at any time. Information is subject to change without notice. Consult your local representative for information on offerings available in your area. Lenovo reserves the right to change specifications or other product information without notice. Lenovo is not responsible for photographic or typographical errors. Lenovo provides this publication "as is" without warranty of any kind, either express or implied, including the implied warranties of merchantability or fitness for a particular purpose.

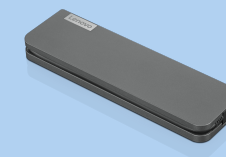
Recommended Accessories



ThinkPad USB-C Dock Gen 2

40AS0090US

- Lenovo understands that modern business depends on a wide variety of PC's and even brands to meet their business needs. To make this easier Lenovo USB-C dock is compatible with Lenovo notebooks as well as note...



Lenovo USB-C Mini Dock_US

40AU0065US

Expand Your Potential with An Universal Mini Dock; Lenovo understands that modern business depends on a wide variety of PC's and even brands to meet their business needs. To make this easier Lenovo USB-C Mini dock is ...

For a full list of accessories and services, please visit:
<https://smartfind.Lenovo.com>

Lenovo

PSREF
Product Specifications
Reference