

## PERFORMANCE

### Processor

Intel® Core™ i5-10210U (4C / 8T, 1.6 / 4.2GHz, 6MB)

### Graphics

Integrated Intel UHD Graphics

### Chipset

Intel SoC Platform

### Memory

1x 8GB SO-DIMM DDR4-2666

### Memory Slots

Two DDR4 SO-DIMM slots, dual-channel capable

### Max Memory

Up to 64GB DDR4-2666

### Storage

256GB SSD M.2 2280 PCIe® x4 NVMe® Opal

### Storage Support

One SSD mode: one drive, 1x M.2 SSD

- M.2 2280 SSD up to 1TB
- M.2 2242 SSD up to 512GB
- Optional Intel Optane™ Memory integrated with SSD, M.2

### Storage Slot

One SSD mode: one M.2 slot

- One M.2 2280 PCIe Gen 3x4 slot, supports M.2 2242/2280 SSD

### Card Reader

MicroSD Card Reader

### Audio Chip

High Definition (HD) Audio, Realtek® ALC3287 codec

### Speakers

Stereo speakers, 2W x2, Dolby® Audio™

### Camera

IR & 720p with ThinkShutter

### Microphone

2x, Array

### Battery

Integrated 45Wh

### Max Battery Life

MobileMark® 2014: 11.6 hr

MobileMark 2018: 8.56 hr

JEITA 2.0: 10.8 hr

### Power Adapter

65W USB-C® (3-pin)

## DESIGN

### Display

15.6" FHD (1920x1080) IPS 250nits Anti-glare

### Keyboard

Backlit, French

### Case Color

Black

### Case Material

PC + ABS (Top), PC + ABS (Bottom)

### Dimensions (WxDxH)

366.5 x 250 x 21 mm (14.43 x 9.84 x 0.83 inches)

### Weight

Around 1.98 kg (4.37 lbs)

## SOFTWARE

### Operating System

Windows® 10 Pro 64, French

## CONNECTIVITY

### Ethernet

100/1000M

### WLAN + Bluetooth®

RTL8852AE 11ax, 2x2 + BT5.2

### WWAN

WWAN Upgradable to 4G

### Standard Ports

- 1x USB 3.2 Gen 1
- 1x USB 3.2 Gen 1 (Always On)
- 1x USB-C 3.2 Gen 1 (support data transfer, Power Delivery and DisplayPort™ 1.2)
- 1x USB-C 3.2 Gen 2 (support data transfer, Power Delivery and DisplayPort 1.2)
- 1x HDMI® 1.4b
- 1x microSD card reader
- 1x Ethernet (RJ-45)
- 1x Headphone / microphone combo jack (3.5mm)
- 1x Side docking connector

### Optional Ports (configured)

- 1x Smart card reader
- 1x Nano-SIM card slot (WWAN support models)

### Docking

Various docking solutions supported via USB-C.

For more compatible docking solutions, please visit [Docking for ThinkPad® L15 Gen 1 \(Intel\)](#)

## SECURITY & PRIVACY

### Smart Card Reader

Smart Card Reader

### Security Chip

Discrete TPM 2.0

### Fingerprint Reader

Touch Style, Match-on-Host

### Physical Locks

Kensington® Security Slot™

## MANAGEABILITY

### System Management

Non-vPro®

## SERVICE

### Base Warranty

1-year, Depot

## CERTIFICATIONS

### Green Certifications

- EPEAT™ Gold
- ENERGY STAR® 8.0
- TCO Certified
- RoHS compliant

### Mil-Spec Test

MIL-STD-810G military test passed

## MODEL

TopSeller : Yes

Announce Date : 2021-05-18

EAN / UPC / JAN : 0195890946696

End of Support : 2026-12-20



## Premier Support - A direct 24x7x365 line to our most elite technicians.



Advanced technical support, 24x7x365, in more than 100 markets



Technical Account Managers for proactive relationship and escalation management



Comprehensive hardware & OEM software support



Priority on service delivery and repair parts



Single point of contact for simplified end-to-end case management



Lenovo Service Connect Portal for customized reporting and product support

## Accidental Damage Protection - Protection of your PC from the unexpected.

Experience shows that a significant portion of devices may be damaged (and not covered under warranty) in the first three years. Lenovo's Accidental Damage Protection service covers accidents beyond the system warranty such as drops, spills, bumps and even electrical surges. Make sure your new device has maximum protection, avoid unplanned costs and get peace of mind.

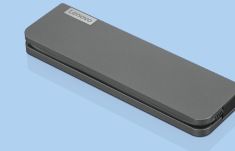
## Base Warranty - Included with the systems you purchase, default 1- or 3-year coverage window.

## Warranty Extensions & Upgrades - Service and protection that's right for your circumstances.

- Pick Up & Return Courier
- Onsite Support
- Technician Installed Customer
- Replaceable Unit Service
- International Warranty Upgrade

Lenovo may not offer the products, services or features discussed in this document in all regions. Lenovo may withdraw an offering at any time. Information is subject to change without notice. Consult your local representative for information on offerings available in your area. Lenovo reserves the right to change specifications or other product information without notice. Lenovo is not responsible for photographic or typographical errors. Lenovo provides this publication "as is" without warranty of any kind, either express or implied, including the implied warranties of merchantability or fitness for a particular purpose.

## Recommended Accessories



### Lenovo USB-C Mini Dock\_US

40AU0065US

Expand Your Potential with An Universal Mini Dock; Lenovo understands that modern business depends on a wide variety of PC's and even brands to meet their business needs. To make this easier Lenovo USB-C Mini dock is ...

## Recommended Services

BEST	3Y Lenovo Support (Premier Support + Keep Your Drive + Sealed Battery + International Upg) (5PS0N73181)
BETTER	3Y Premier Support Upgrade from 1Y Courier/Carry-in (5WS0T36154)
GOOD	3Y Onsite upgrade from 1Y Courier/Carry-in (5WS0A14086)

For a full list of accessories and services, please visit:  
<https://smartfind.Lenovo.com>

**Lenovo**

**PSREF**  
Product Specifications  
Reference